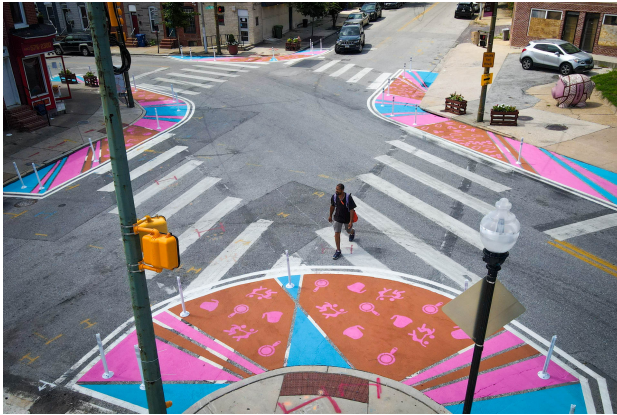


Pratt St Traffic Calming

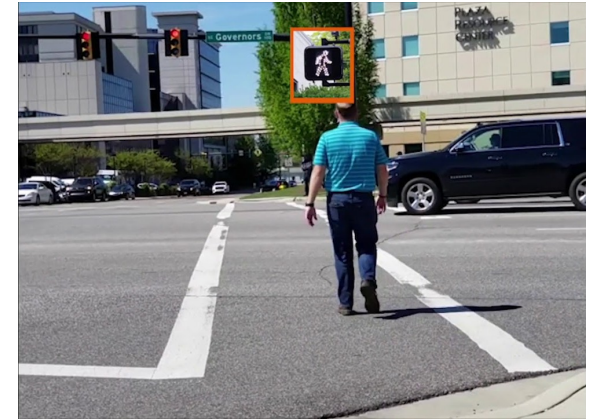
MD DHCD Community Health & Safety Works



Washington & Cross
Art in the Right of Way



Lombard & Stricker
Curb Extensions



Pedestrian Lead Signals

BRNI, BCF, AARP Grants

- Raised sidewalks for accessibility, as speed bumps
 - Handicap curb spots
 - Dedicated drop zones
- Elevated Crosswalks
- Speed Bumps



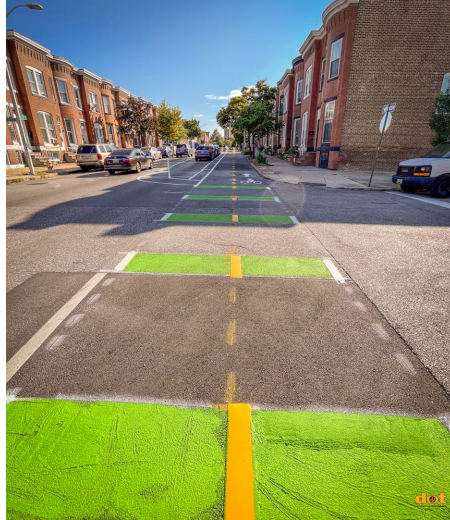
Road Diet – Active Mobility Track



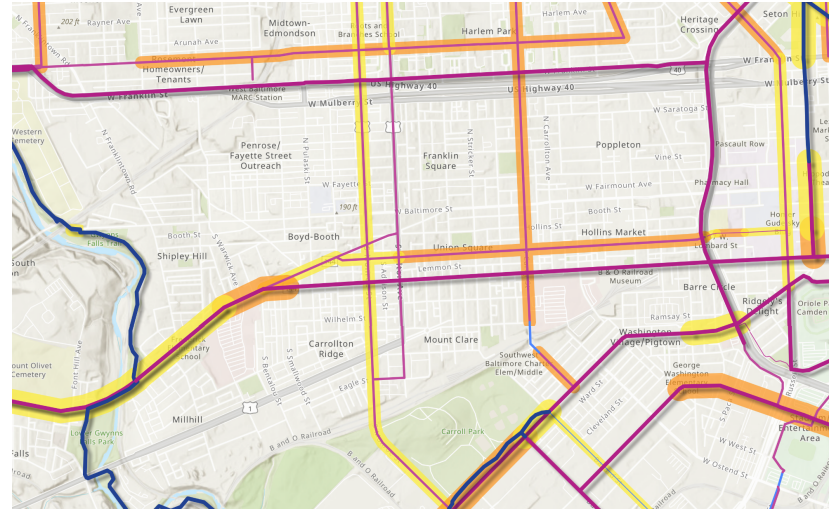
Big Jump / Druid
Park Lake Drive



Monument St



28th St



BMC Bikeable Baltimore Region
Draft Plan, with stress levels

State Grants

Road Diet can qualify for EVERY state active mobility grant:

- Safe Routes to Schools
SEED School and Frederick Elementary
- Transportation Alternatives Program
- Bikeways Program
 - *Frederick Ave Lanes, MLK Sidepath, Inner Harbor*
- Recreational Trails Program (*Gwynn Falls Trail*)
- Bicycle Retrofit (*state rt 144*)



Federal Grants

Pratt St is in the BMC Bikeable Baltimore Region Plan!

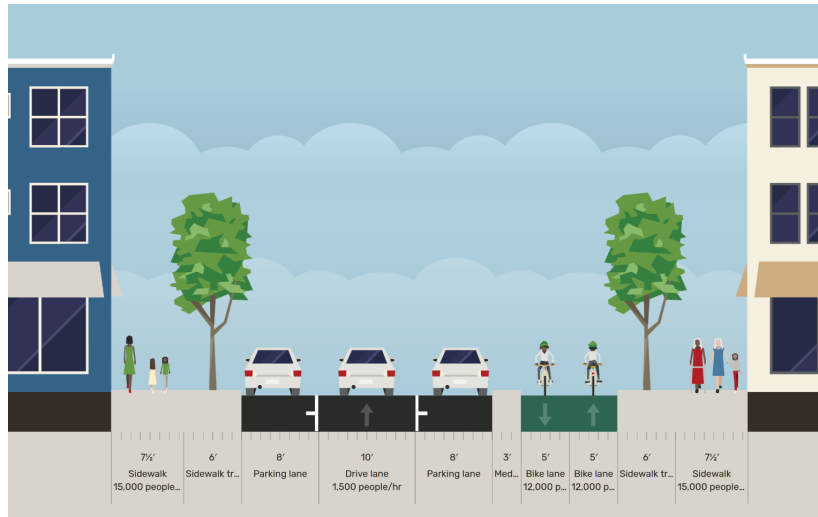
- Safe Streets and Roads for All
for any road that need traffic calming
- Reconnecting Communities and Neighborhoods
time to work, MLK Blvd divides
- Active Transportation Infrastructure Investment Program
all the connected facilities incl Gwynn Falls Trail



Baltimore
Metropolitan
Council



Road Diet Concept



Design Based off 28th St



Dedicated Scooter
and Bike Parklets



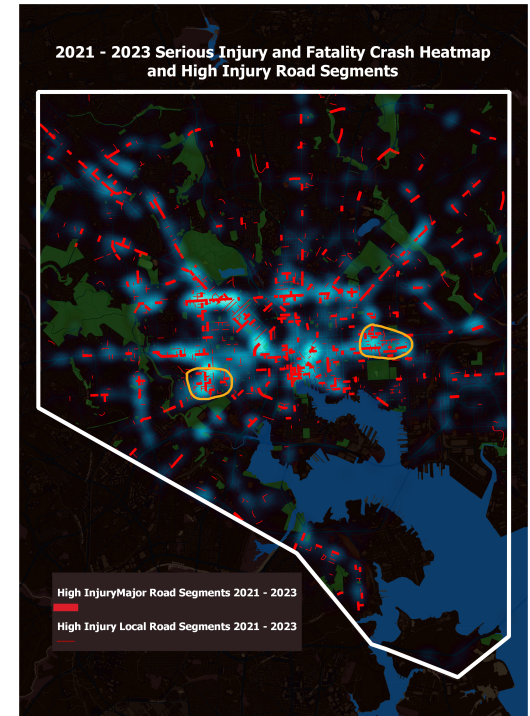
Floating Bus Stop

Why Now & Us?

- “There is nothing officially planned for Pratt Street.” ~ Baltimore City Department of Transportation
- DOT is supportive of traffic calming efforts
- Started by Mount Clare
- Letters of support from Hollins Market, Barre Circle, and more... hopefully you!
- Get desired road conditions on record before BGE resurfaces
- You can download this presentation at <https://mountclare.net/pratt.pdf> !

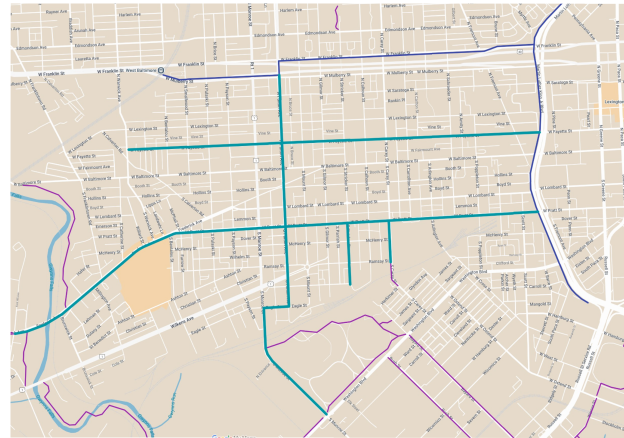
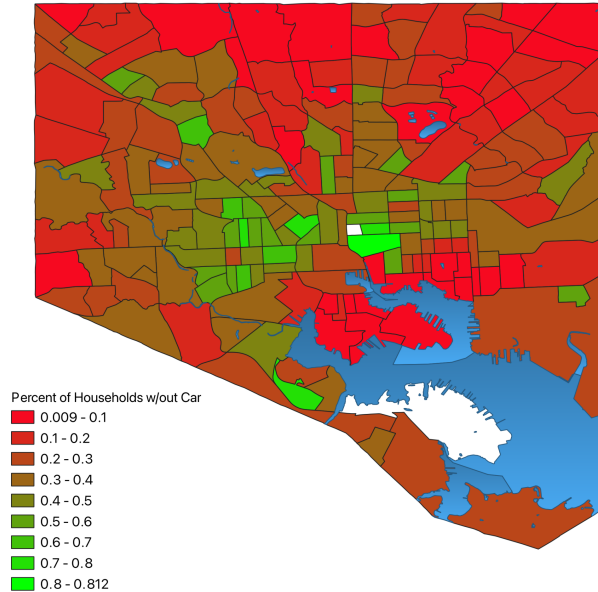


From BCDOT
Towards Zero
Presentation ->

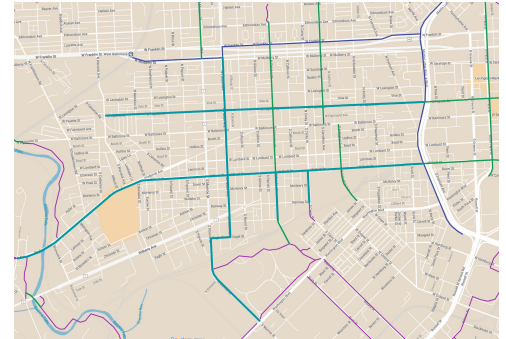


Additional Concepts

Baltimore City Households w/out Vehicle By Census Tract



Possible area all ages active mobility
network concepts phases 1 + 2



Presented By:
Melanie Scheirer
1623 W Pratt St

SEE MORE at <https://talk.mountclare.net/t/pratt-traffic-calming> mel@mountclare.net